



St Mary Magdalen Bermondsey

"Here for good"

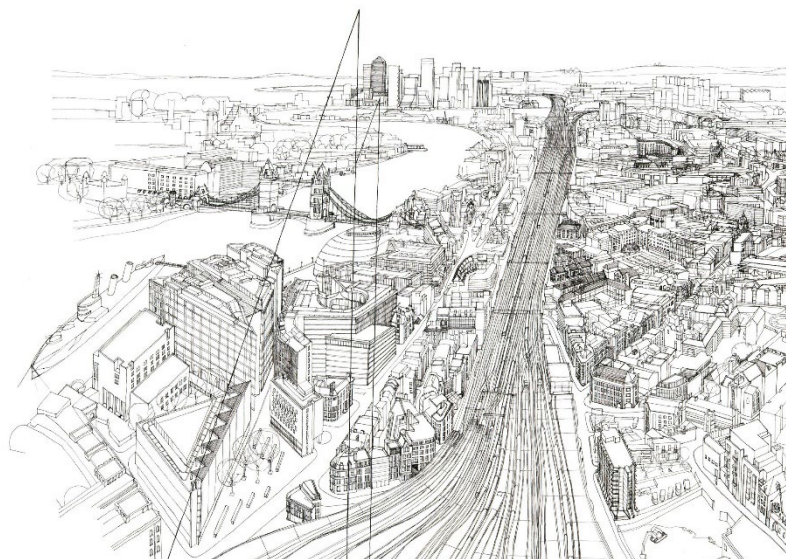
Our plans are currently in an early stage. We'd love you to contribute to our consultation to help us develop them: [click here](#).

Our context:

We are first and foremost a local parish church, and our primary function is as a place of gathered worship for the parish.

Our Vision:

We have a vision to be 'Here for Good!', as a physical presence in continuity with the history of a church on our site since 1290, from which the good news of Jesus Christ has been proclaimed to our parish; as a spiritual presence of the gathered worship of God and a place of prayer for the needs of the world; and as a place that can build fruitful partnerships with our community through the use of the building.



'Windows to Other Worlds': The Parish of St Mary Magdalen, Bermondsey. CM, 2022.

In 2002, the church's annual report envisioned "the front facade of St Mary's on Bermondsey Street, with all the doors and windows full of light, shining out, because it is a place of openness and light – a place from which people walk out and reach into the world, of which we are a part, and at the same time [a place] to which people are drawn because of the light."

Why do we need to do anything to the building?



We are a wonderful, historic and yet underused asset that holds memories for generations of local people. Our desire is to create a welcoming space for worship and other activities which exudes lightness and warmth to the street in the heart of a diverse and growing community. Our desire is that by enhancing the accessibility and flexibility of the church building, we will enhance its sustainability for current and future generations of worshippers.

There are urgent needs for works to protect and preserve the church, fixing serious deterioration and getting it off the Heritage At Risk register, investigating the causes of recurrent problems, and taking action to maintain the building for the future. These pictures show some of the current issues.

But we want to do more than running repairs. We would like to take the opportunity of the necessary work to the building to develop it in line with our vision and ensure its future for the people of Bermondsey. We wish to consider the following areas:

- Flexibility (greater use of the nave)
- Accessibility (removing barriers to use)
- Transparency (developing a warm and welcoming environment)
- History/legacy (remembering and honouring the past)
- Hospitality (enabling us to host a wider array of activities)
- Opportunity (for income, for employment, for local artists and residents)



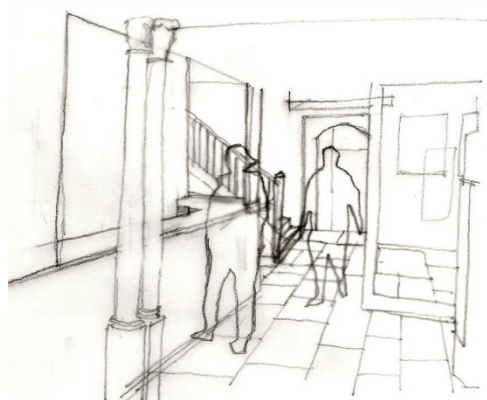
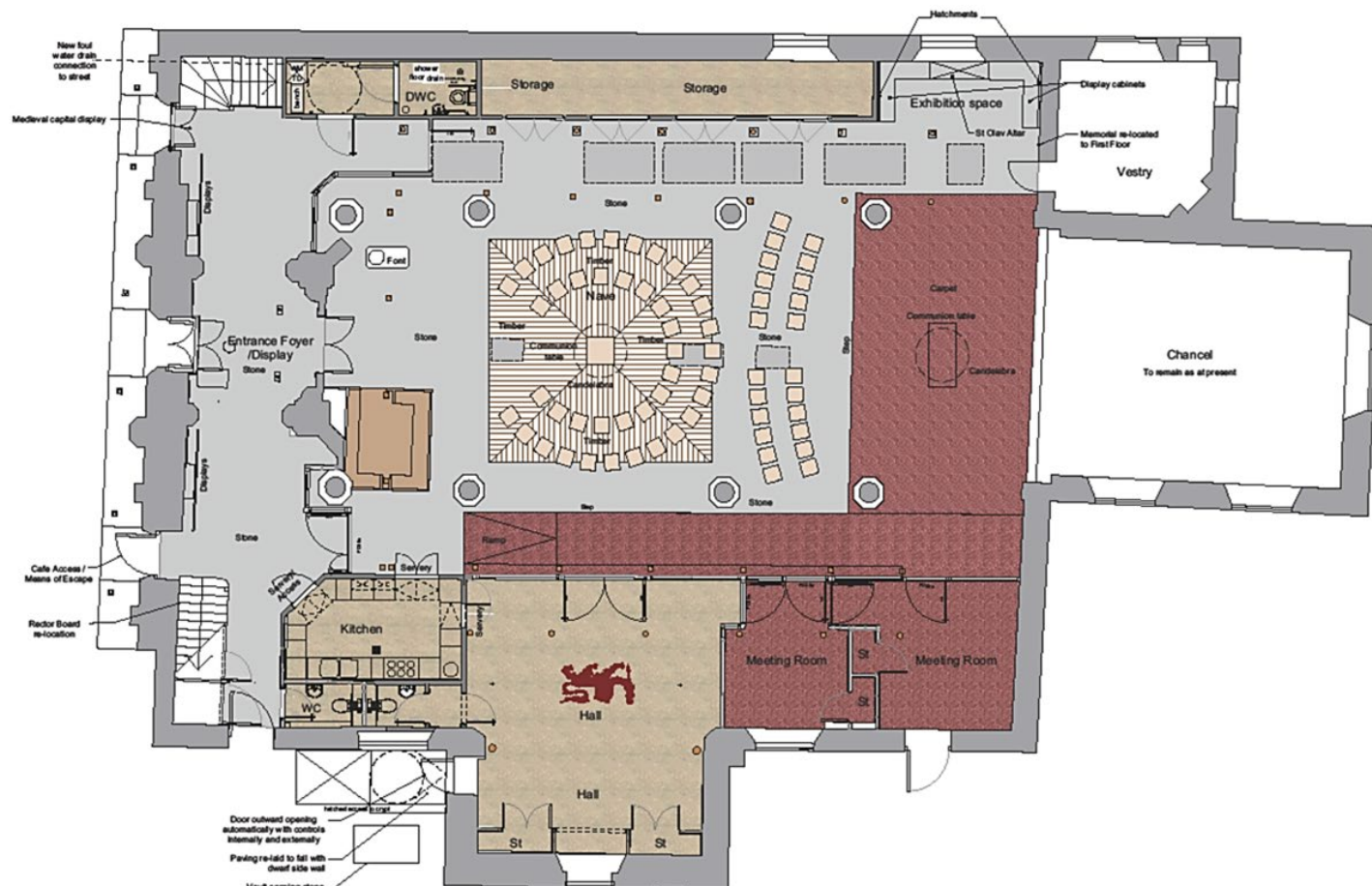
St Mary Magdalen Bermondsey

"Here for good"

This is the latest stage in a process that goes back to 2003. Ten years ago, we went through phases one and two, opening up the 'social space' in the south aisle. Phase three will address the main body of the church to deliver the goals laid out above.

Initial Phase Three Proposals

Please consider the following initial proposals and sketches, and respond to our consultation [at this link](#).



A sketch of the south-west corner of the church, with a cafe counter and open to the entrance.

This proposed plan includes the following: 1. Fabric Repairs. 2. Access. 3. Toilet & Shower facilities NW side. 4. Kitchen enlargement. 5. Enhancing Phase 1 & 2 works. 6. Additional Storage. 7. Historic Artifacts Display. 8. Stone capitals. 9. Organ Restoration. 10. Nave Floor and acoustics. 11. Flexible seating. 12. Heating.